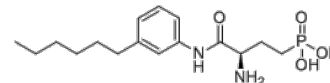


Product Name : W146
Cat. No. : PC-63010
CAS No. : 909725-61-7
Molecular Formula : C₁₆H₂₇N₂O₄P
Molecular Weight : 342.376
Target : Lysophospholipid Receptor
Solubility : 10 mM in DMSO



Biological Activity

W146 is a potent, selective **S1P1** antagonist with K_i of 18 nM, displays no effect at S1P2, S1P3 or S1P5, enhances capillary leakage and restores lymphocyte egress in vivo.

References

- Sanna MG, et al. *Nat Chem Biol.* 2006 Aug;2(8):434-41.
Gonzalez-Cabrera PJ, et al. *Mol Pharmacol.* 2008 Nov;74(5):1308-18.
Tarrasón G, et al. *Int Immunopharmacol.* 2011 Nov;11(11):1773-9.

Caution: Product has not been fully validated for medical applications. Lab Use Only!

E-mail: tech@probechem.com